

# Colon Case Study

onco*type* DX<sup>®</sup>  
Colon Cancer Assay

## 54-Year-Old Female Patient

Tumor Type Adenocarcinoma

Tumor Stage Stage II: T3 (N0)

Histologic Grade Low (1)

Lymph Node Status Negative

Number of Lymph Nodes Assessed: 45

Mismatch Repair (MMR) Status MMR-P (MSS)

Lymph Node Status Not Assessed

Performance: N/A

Obstruction: Absent

Other Information Referred to medical oncology but not treated.

### CASE SUBMITTED BY:

Clifford Deal, MD

Richmond Hospital

Richmond, VA

# Colon Case Study

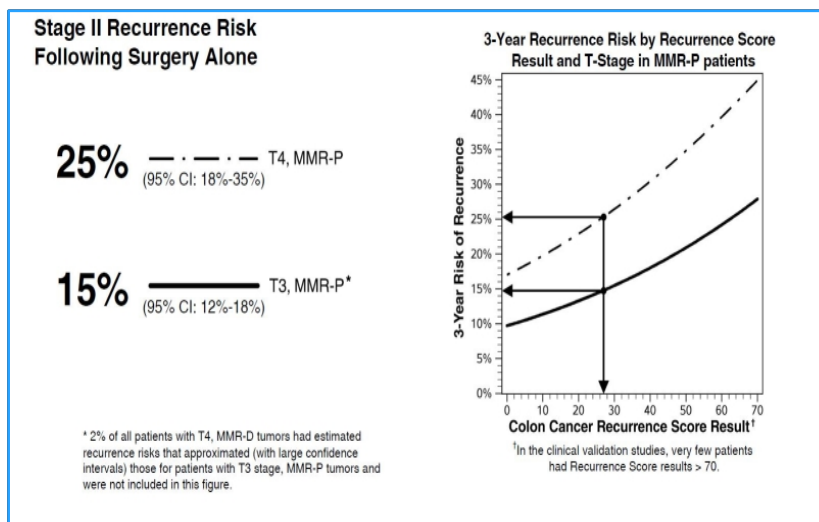
## CLINICAL EXPERIENCE

### Recurrence 27

#### Prognosis for Stage II MMR-P Colon Cancer Patients Following Surgery Alone

The clinical validation study included stage II colon cancer patients from the surgery-alone arm of the QUASAR study (N=711)<sup>1</sup> and a pre-specified analysis of the Recurrence Score result, in the context of T-stage and MMR status.

The average 3 year risk of recurrence for patients who had a Recurrence Score result of 27 was:



Impact of Nodes Assessed: For patients with  $\geq 12$  nodes examined the 3-year recurrence risk was lower than that shown in the Figure. For T3 MMR-P patients the reduction in risk ranged from 2% for low to 6% for high Recurrence Score results. For T4 MMR-P patients the reduction in risk ranged from 4% to 10% respectively. For all MMR-P patients with  $< 12$  nodes examined, the recurrence risk was 2-3% higher.

# Colon Case Study

## CLINICAL EXPERIENCE

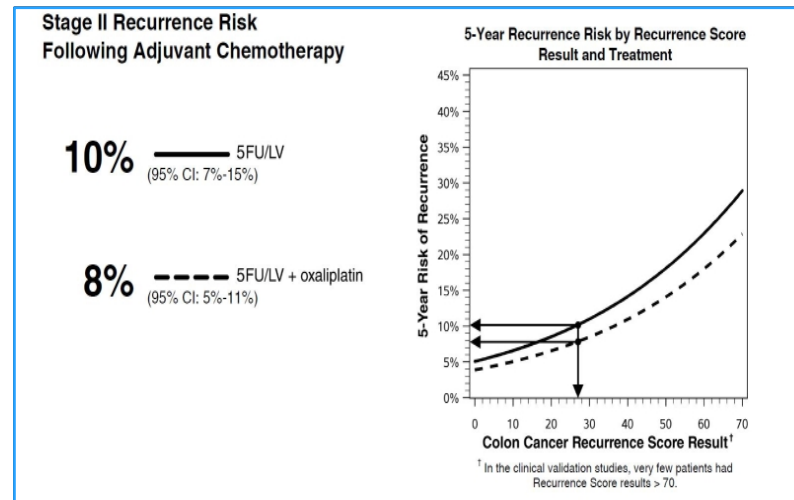
### Recurrence 27



#### Prognosis for Stage II MMR-P Colon Cancer Patients Following Adjuvant Chemotherapy

The clinical validation study included patients from the NSABP C-07 trial which randomized patients to 5FU/LV versus 5FU/LV+oxaliplatin; 264 patients were stage II, including 247 (94%) with T3 tumors. Of 213 patients with available MMR status, 82% were MMR-P.<sup>2</sup>

The average 5 year risk of recurrence for patients who had a Recurrence Score result of 27 was:



Impact of Nodes Assessed: The recurrence risk for patients with ≥ 12 nodes examined was lower than the risk for those with < 12 nodes examined.

#### References:

1. Gray et al. J Clin Oncol. 2011.
2. Yothers et al. J Clin Oncol. 2013.